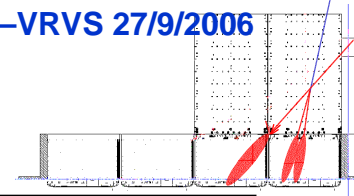




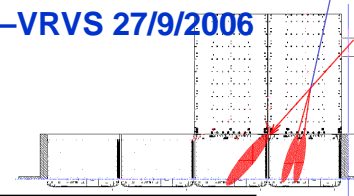
Status and news



- ❑ CERN tests data
 - 94M evts collected and processed
 - Currently reprocessing PS data, then SPS
 - Disk is ~50% full, can we start deleting old processed files?
 - Start thinking to list of MC runs to generate once MC is defined
- ❑ CU safely stored at INFN since 20/9
- ❑ GSI test preparation
 - Allocated Beam time is 24 hrs (Nov 18 6AM – Nov 19 6AM)
 - INFN visit to GSI on October 10-12 to discuss
 - Detailed beam operation plan
 - CU mechanical support
 - Logistics (installation, access, network for data and users)
 - We must agree on
 - CU position; current idea is shoot beam at small angle through top ACD tile and into tower 2
 - configurations for CNO operation
 - Local offline for quick data feedback



Contacts for analysis



- ❑ Regular VRVS meetings resumed
 - **MOVED to Wednesday, 8AM PST (5PM europe), biweekly (will consider weekly if necessary)**
- ❑ Rely on existing confluence page and beamlist to share information and keep track of efforts around
 - **Please post your analysis in the *List of analysis topics* at <https://confluence.slac.stanford.edu/display/BeamTest/List+of+Data+Analysis>**
 - **update your page regularly**
 - **Please also attach your macros to the page**
 - Help other people getting onboard, maximize bug finding
- ❑ Plan a workshop before the end of the year
 - **Current proposal is nov 13-14 in Paris**
 - **Also considering a joint week for Beam Test and ISOC workshops**