

Gain cal

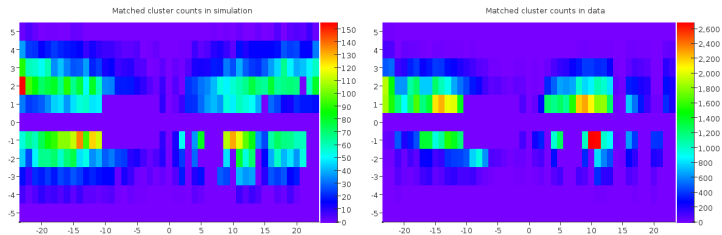
Sho Uemura

Hit energy distributions

$$K_i = \frac{1}{\sum_{j=1}^{N_i} w_{j,i}} \sum_{j=1}^{N_i} \frac{P_j}{E_j^{5 \times 5}} w_{j,i} \quad (1)$$

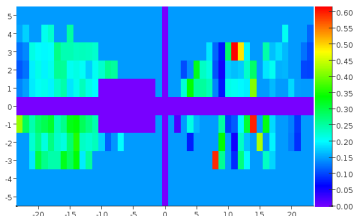
A weight $w_{j,i}$ is assigned to each event j involving crystal i proportional to the fraction of the total energy deposited in crystal i , so $w_{j,i} = E_{j,i} / E_j^{5 \times 5}$. P_j is the electron momentum measured in the Tracker.

MC and data



E/p distributions

Crystal gains after iterating



Crystal gains after iterating

