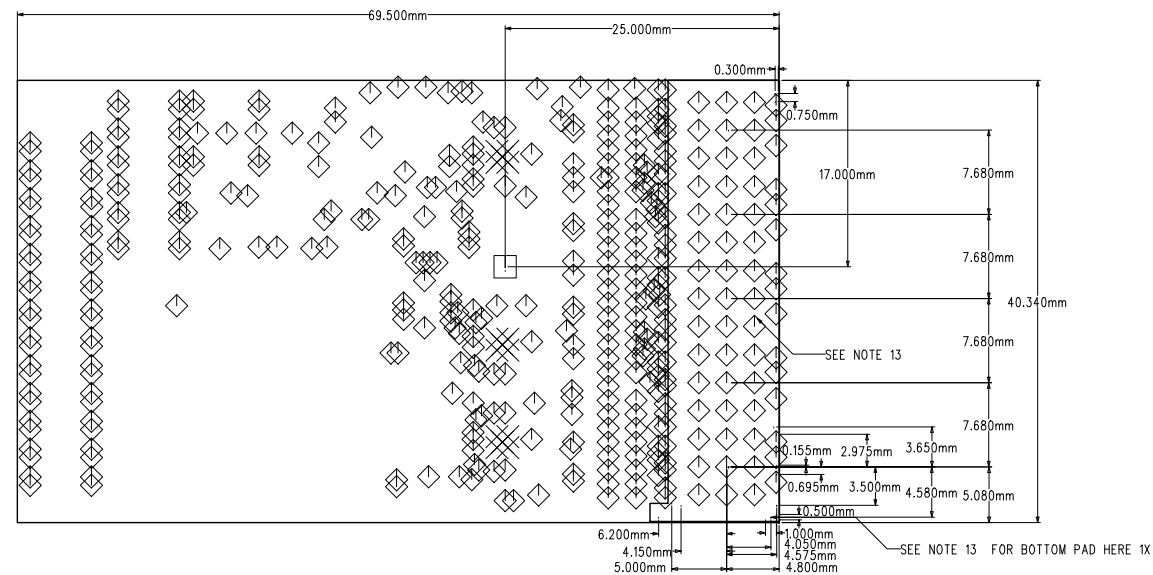
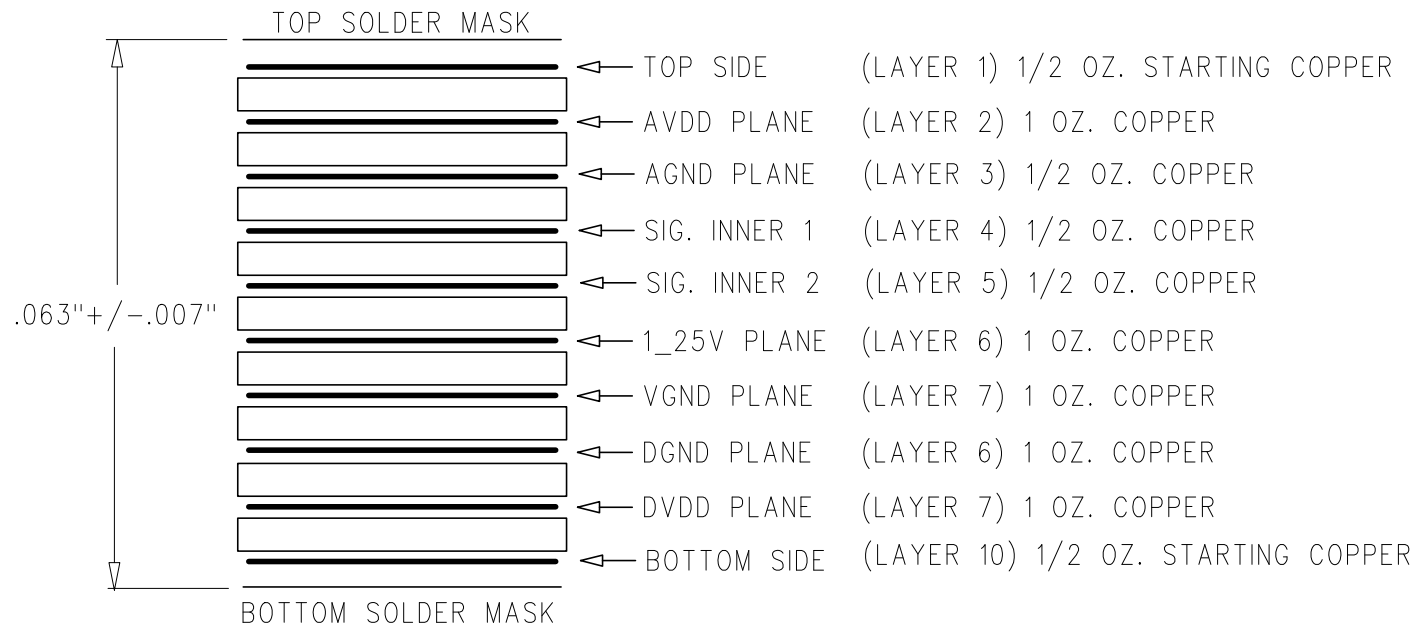


NOTES: (UNLESS OTHERWISE SPECIFIED:)

8-LAYER STACK-UP

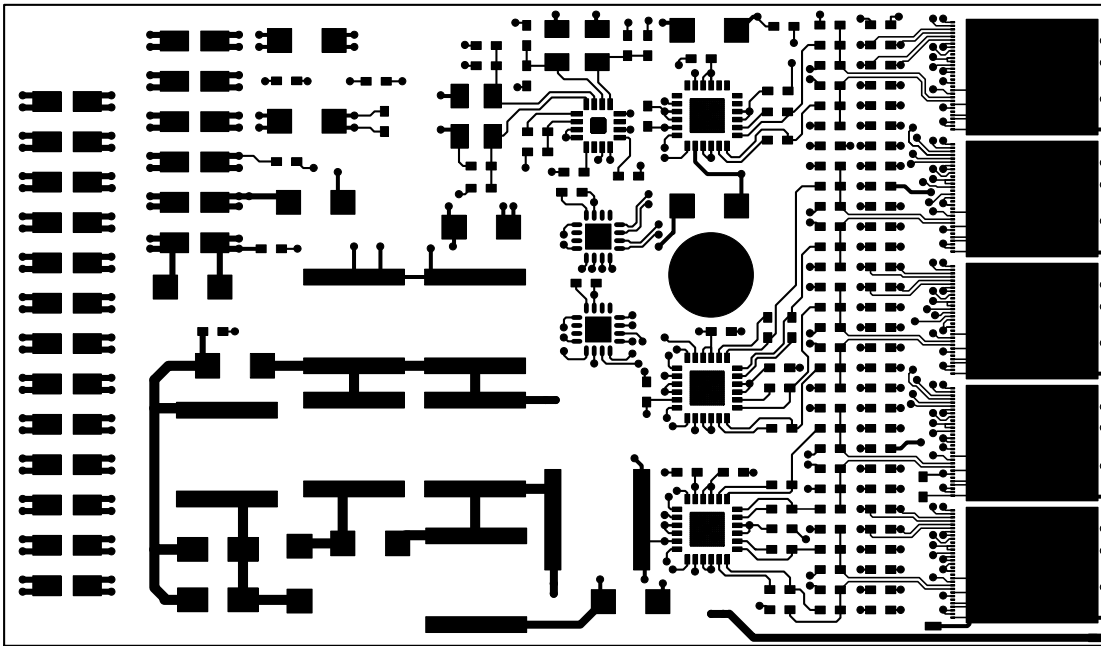


DRILL DRAWING

SLAC NATIONAL ACCELERATOR LABORATORY U.S. DEPARTMENT OF ENERGY STANFORD UNIVERSITY STANFORD, CALIFORNIA	SLAC HEAVY PHOTON TRACKER HYBRID	
22 SEP 2011		
ENGR: R. HERBST DSNGR: T. PHAN	PC-249-901-03-C01	SHT 1 OF 15

- FABRICATE PWB FROM GERBER DATA CONTAINED IN ZIP FILE.
- CLASS 3 PWB PER IPC-6011 .
- TYPE 3 PWB PER IPC-6012A WITH AMENDMENT 1 .
- TYPE 1C ASSEMBLY PER IPC-2222.
- MATERIAL REQUIREMENTS:
 - POLYIMIDE
 - SEE STACK-UP DETAIL FOR AREA WEIGHT PER SQUARE FOOT.
- PINK RING IS NOT PERMITTED.
- PLATING IN THROUGH HOLES SHALL BE 0.001 INCH MINIMUM.
- PREPREG LAYERS SHALL BE 2 PLYS MINIMUM .
- SOLDER MASK -GREEN PHOTO- IMAGEABLE SOLDER MASK PER IPC-SM-840C CLASS H SHALL BE APPLIED TO BOTH SIDES OF THE PWB (SMOBC).
- FINISH - ALL EXPOSED COPPER AREAS NOT COVERED WITH SOLDER MASK SHALL BE IMMERSION GOLD.
- TOLERANCES:
 - BOW AND TWIST SHALL NOT EXCEED 0.5% .
 - CONDUCTOR WIDTH AND SPACING SHALL BE WITHIN 0.001 INCH OF GERBER FILE DATA.
 - MINIMUM DIELECTRIC THICKNESS SHALL BE 0.004 INCH.
 - FINAL PWB THICKNESS SHALL BE AS SHOWN IN STACK-UP DETAIL.
 - SURFACE MOUNT PADS SHALL BE FLAT AND SHALL NOT EXTEND MORE THAN 0.003 INCH ABOVE THE PWB SURFACE.
- PLATED THROUGH HOLES:
 - HOLE SIZES IN DRILL CHART ARE IN MILS AND SPECIFY FINISHED DIAMETERS.
 - LAYER TO LAYER REGISTRATION SHALL BE WITHIN 0.003 INCH.
 - HOLE LOCATION SHALL BE WITHIN 0.004 RADIUS OF TRUE POSITION (RTP).
 - ALL HOLES SHALL BE ON FIRST DRILL. SECOND DRILL IS NOT PERMITTED.
 - TOLERANCE FOR COMPONENT LEAD HOLES IS +/- 0.003 INCH.
 - TOLERANCE FOR VIA HOLES IS +0.002 / -0.010 INCH.
- PLATE THIS AREA WITH SOFT GOLD FOR WIRE BOND.

SIZE	QTY	SYM	PLATED	TOL
8	403	◇	YES	SEE_NOTES
12	15	×	YES	SEE_NOTES
100	1	□	NO	SEE_NOTES



TOP. SIDE

LAYER 1

SLAC NATIONAL ACCELERATOR LABORATORY
U.S. DEPARTMENT OF ENERGY
STANFORD UNIVERSITY STANFORD, CALIFORNIA

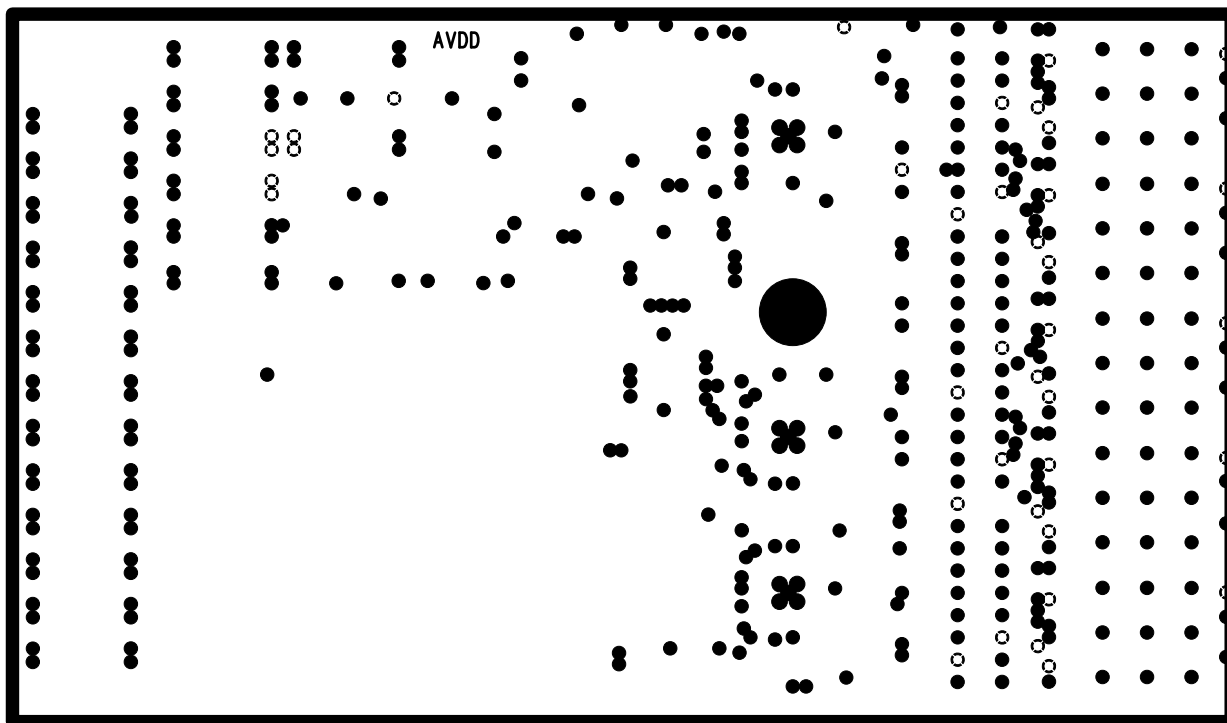
22 SEP 2011

ENGR: R. HERBST
DSNGR: T. PHAN

SLAC
HEAVY PHOTON TRACKER HYBRID

PC-249-901-03-C01

SHT 5 OF 15



AVDD PLANE	LAYER 2
------------	---------

SLAC NATIONAL ACCELERATOR LABORATORY U.S. DEPARTMENT OF ENERGY STANFORD UNIVERSITY STANFORD, CALIFORNIA
--

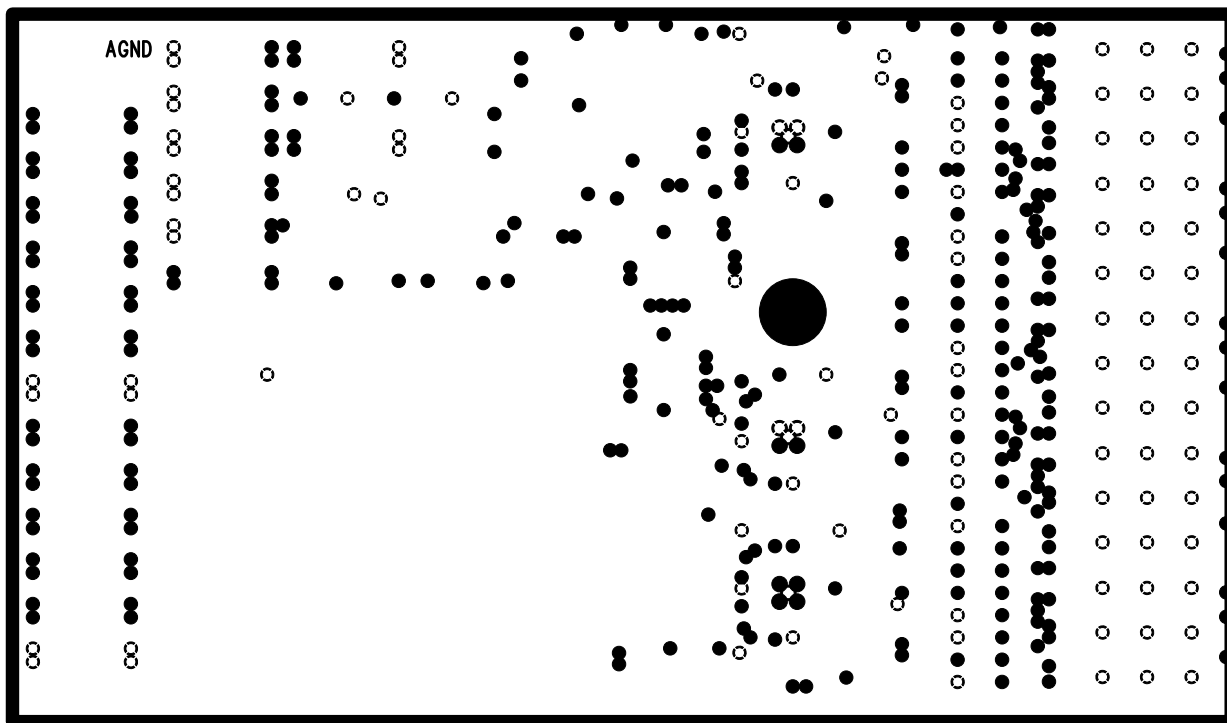
SLAC HEAVY PHOTON TRACKER HYBRID	
-------------------------------------	--

22 SEP 2011

ENGR: R. HERBST DSNGR: T. PHAN

PC-249-901-03-C01

SHT 6 OF 15



AGND PLANE	LAYER 3
------------	---------

SLAC NATIONAL ACCELERATOR LABORATORY U.S. DEPARTMENT OF ENERGY STANFORD UNIVERSITY STANFORD, CALIFORNIA
--

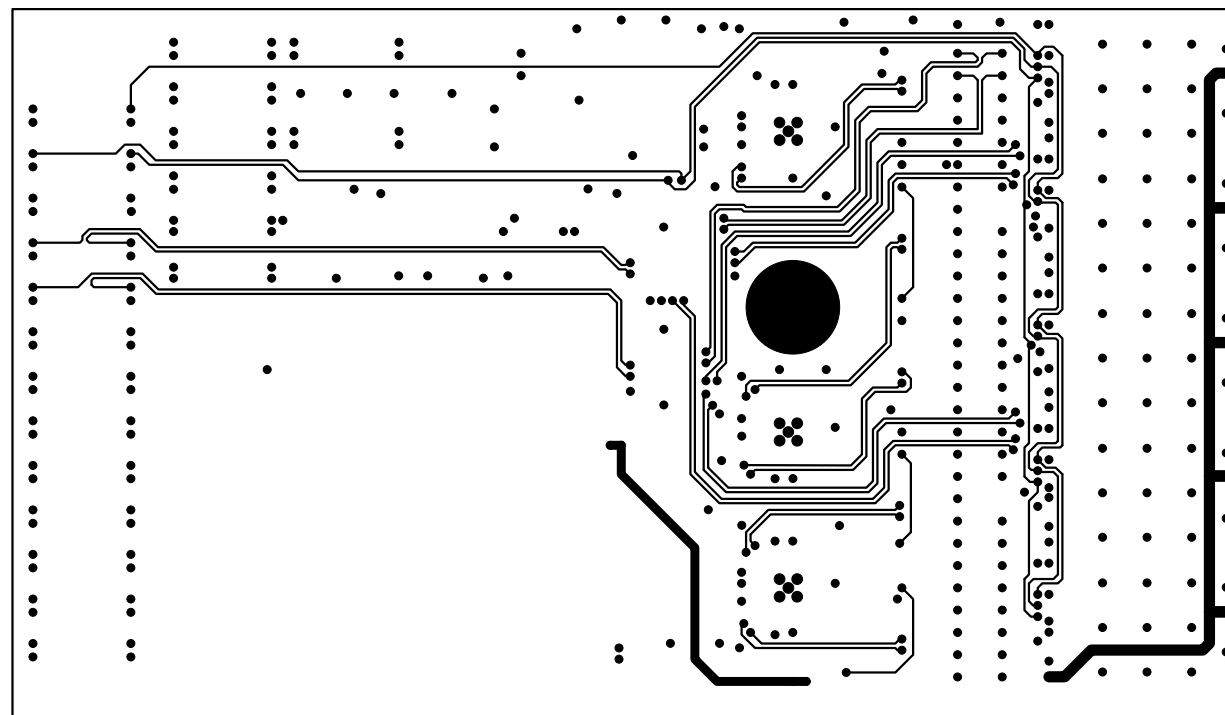
SLAC HEAVY PHOTON TRACKER HYBRID

22 SEP 2011

ENGR: R. HERBST DSNGR: T. PHAN

PC-249-901-03-C01

SHT 7 OF 15



SIG INNER 1	LAYER 4
-------------	---------

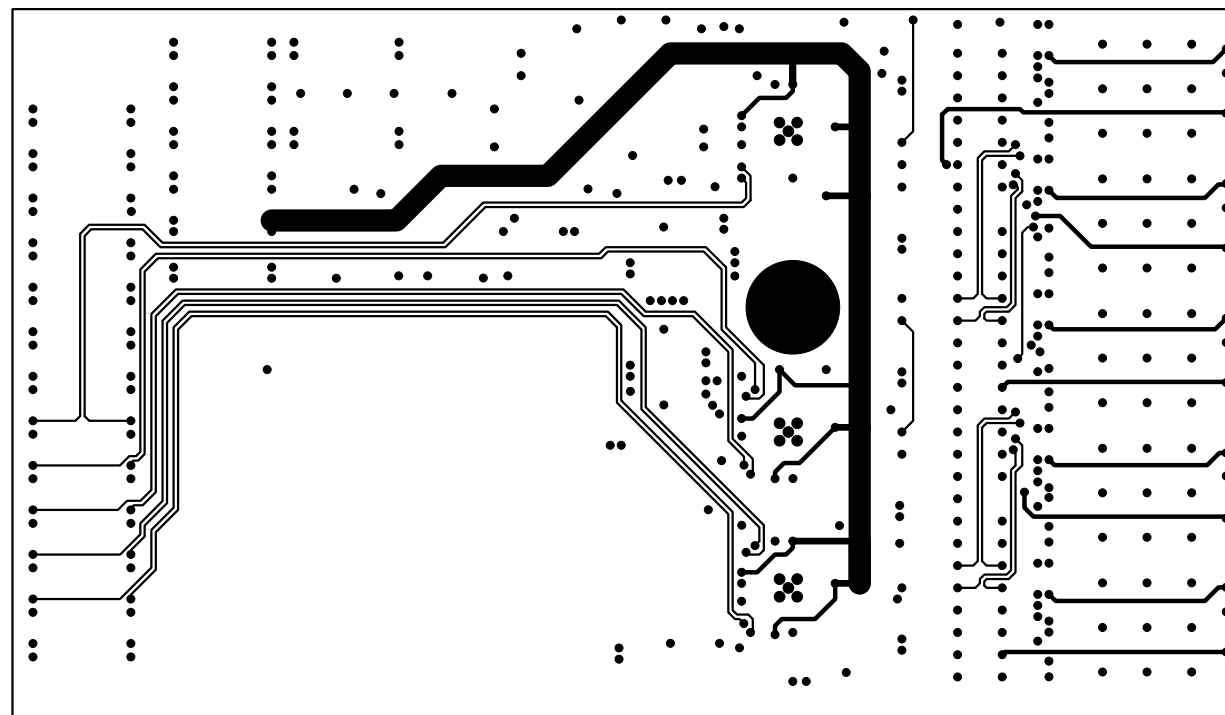
SLAC NATIONAL ACCELERATOR LABORATORY U.S. DEPARTMENT OF ENERGY STANFORD UNIVERSITY STANFORD, CALIFORNIA

SLAC HEAVY PHOTON TRACKER HYBRID

22 SEP 2011

ENGR: R. HERBST DSNGR: T. PHAN

PC-249-901-03-C01	SHT 8 OF 15
-------------------	-------------



SIG INNER 2	LAYER 5
-------------	---------

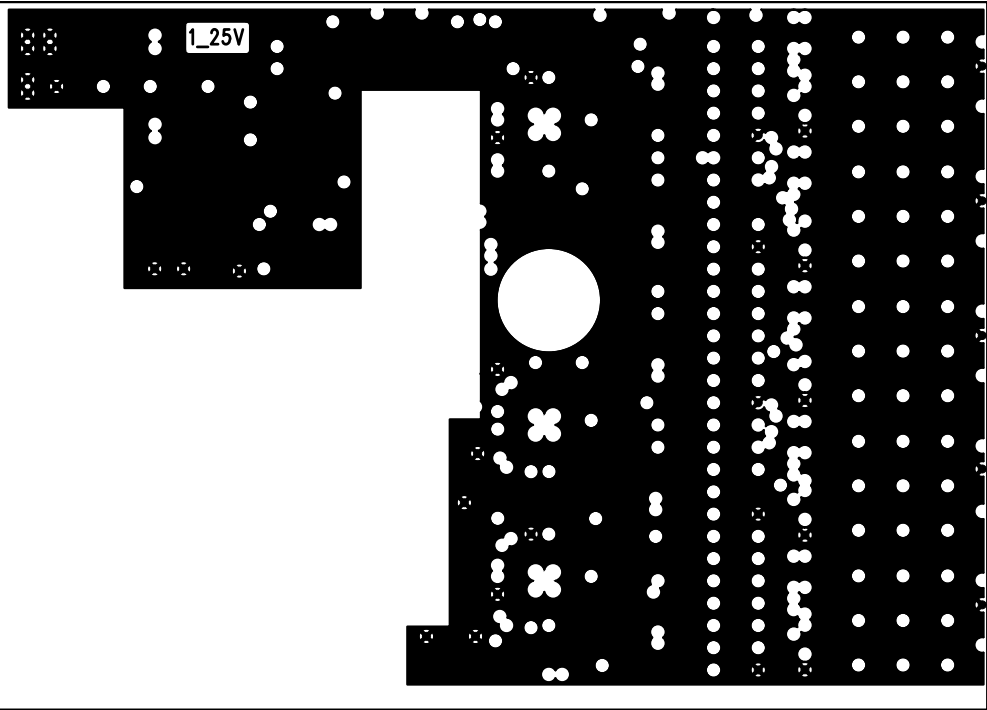
SLAC NATIONAL ACCELERATOR LABORATORY U.S. DEPARTMENT OF ENERGY STANFORD UNIVERSITY STANFORD, CALIFORNIA
--

SLAC HEAVY PHOTON TRACKER HYBRID

22 SEP 2011

ENGR: R. HERBST DSNGR: T. PHAN

PC-249-901-03-C01	SHT 9 OF 15
-------------------	-------------



V1_25V PLANE

LAYER 6

SLAC NATIONAL ACCELERATOR LABORATORY
 U.S. DEPARTMENT OF ENERGY
 STANFORD UNIVERSITY STANFORD, CALIFORNIA

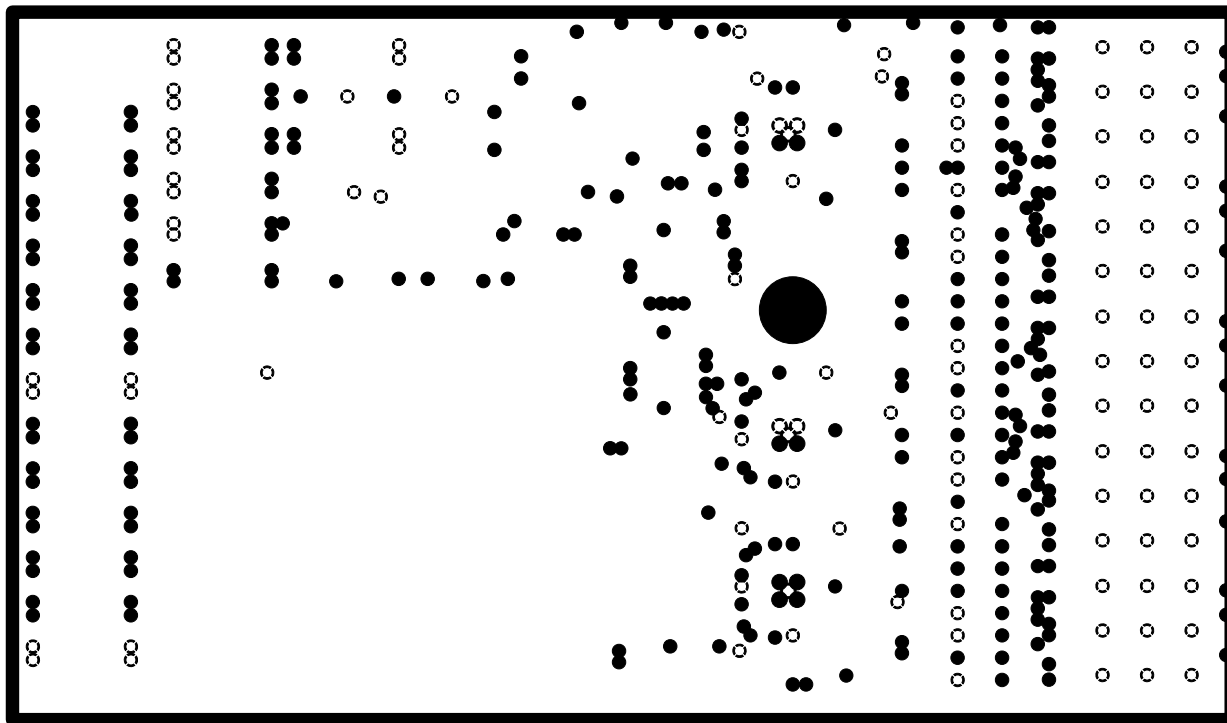
SLAC
 HEAVY PHOTON TRACKER HYBRID

22 SEP 2011

ENGR: R. HERBST
 DSNGR: T. PHAN

PC-249-901-03-C01

SHT 10 OF 15



AGND PLANE

LAYER 7

SLAC NATIONAL ACCELERATOR LABORATORY
U.S. DEPARTMENT OF ENERGY
STANFORD UNIVERSITY STANFORD, CALIFORNIA

SLAC
HEAVY PHOTON TRACKER HYBRID

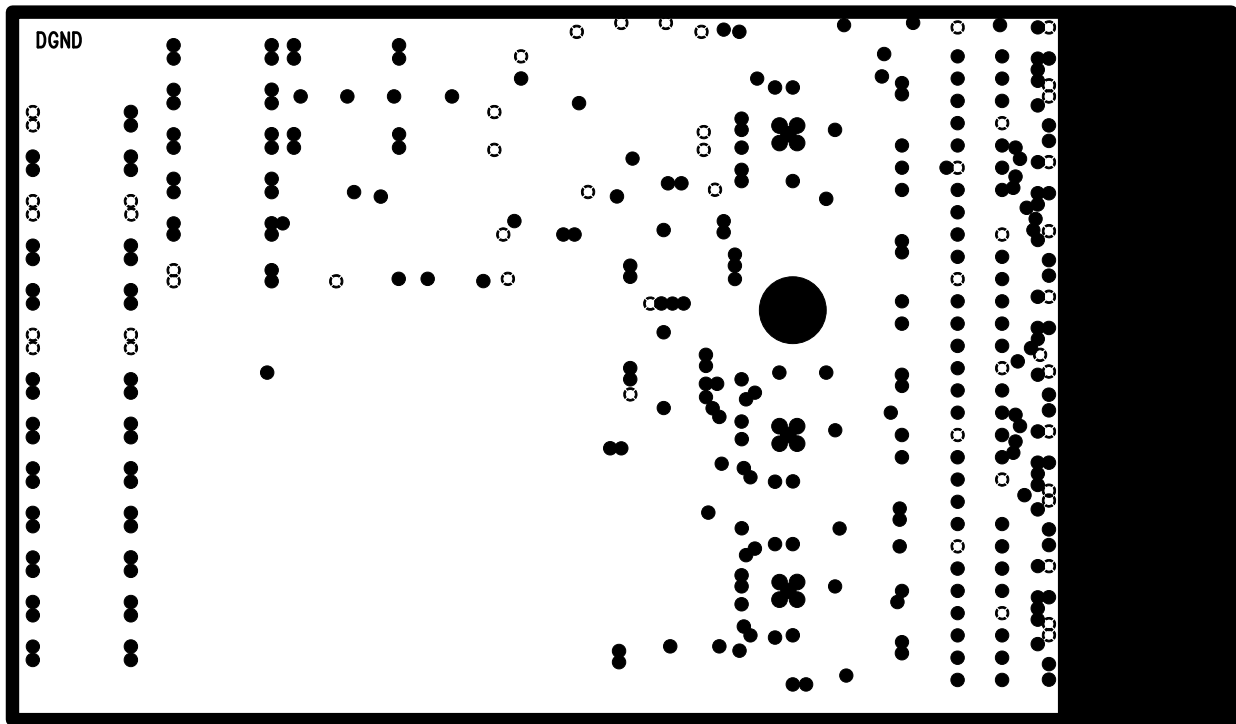
22 SEP 2011

ENGR: R. HERBST
DSNGR: T. PHAN

PC-249-901-03-C01

SHT 11 OF 15

DGND



DGND PLANE

LAYER 8

SLAC NATIONAL ACCELERATOR LABORATORY
U.S. DEPARTMENT OF ENERGY
STANFORD UNIVERSITY STANFORD, CALIFORNIA

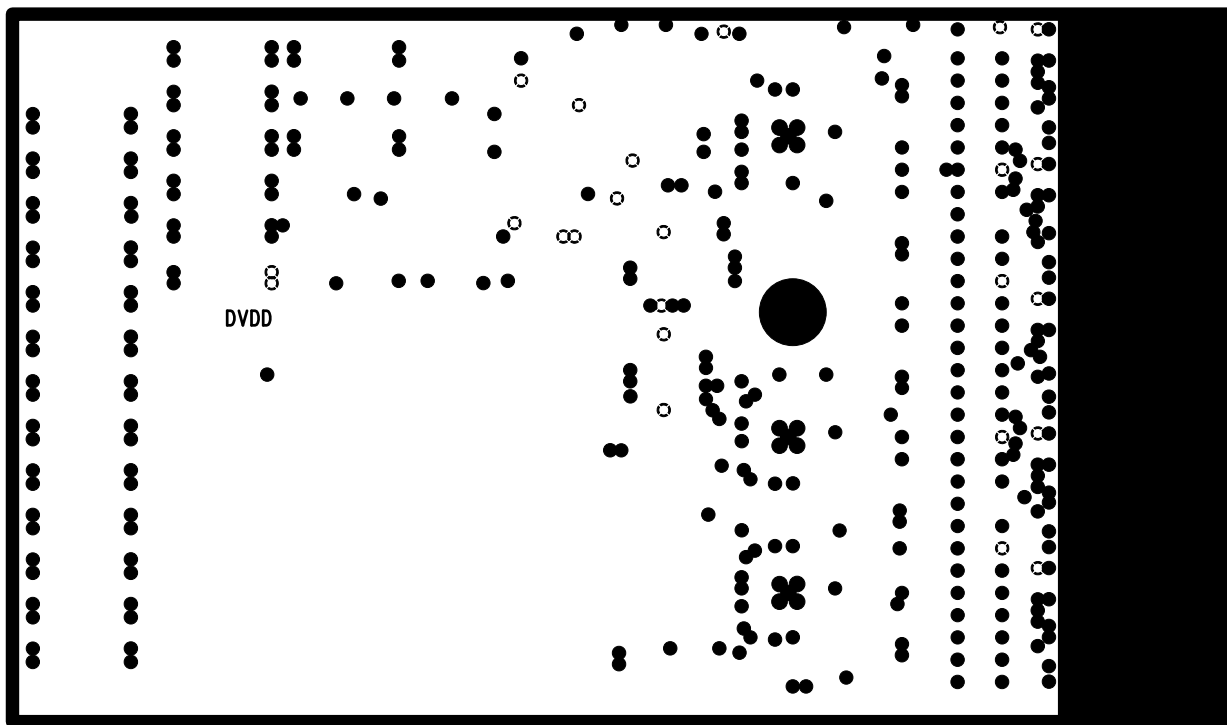
SLAC
HEAVY PHOTON TRACKER HYBRID

22 SEP 2011

ENGR: R. HERBST
DSNGR: T. PHAN

PC-249-901-03-C01

SHT 12 OF 15



DVDD PLANE	LAYER 9
------------	---------

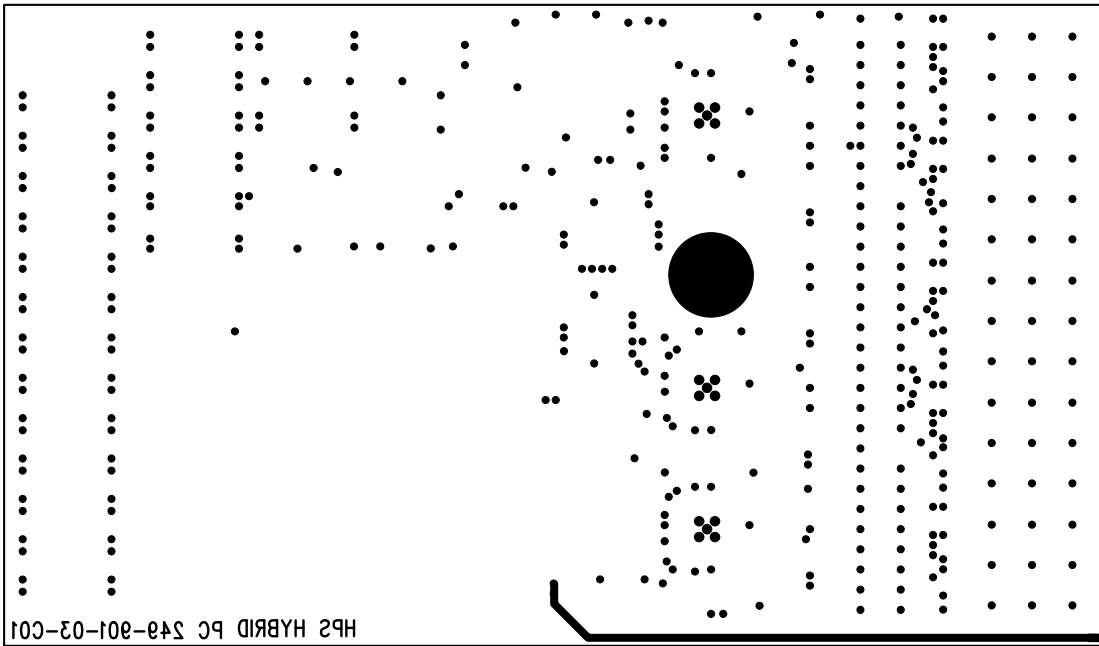
SLAC NATIONAL ACCELERATOR LABORATORY U.S. DEPARTMENT OF ENERGY STANFORD UNIVERSITY STANFORD, CALIFORNIA
--

SLAC HEAVY PHOTON TRACKER HYBRID	
-------------------------------------	--

22 SEP 2011

ENGR: R. HERBST DSNGR: T. PHAN

PC-249-901-03-C01	SHT 13 OF 15
-------------------	--------------



BOTTOM SIDE	LAYER 10
-------------	----------

SLAC NATIONAL ACCELERATOR LABORATORY U.S. DEPARTMENT OF ENERGY STANFORD UNIVERSITY STANFORD, CALIFORNIA

22 SEP 2011

ENGR: R. HERBST DSNR: T. PHAN

SLAC HEAVY PHOTON TRACKER HYBRID

PC-249-901-03-C01	SHT 14 OF 15
-------------------	--------------