

# Setting Up Netbeans 6.5 with Maven 2



**These instructions are deprecated!**

This page is old and deprecated. Please use the current version of Netbeans. The built-in Maven plugin should function fine.

## Short Instructions

1. [Download Maven 2](#). The [2.0.10 release](#) will probably work the best.
2. Add the Maven 2 bin directory to the PATH variable.
3. [Download Netbeans](#).
4. [Install Netbeans](#)
5. Install the Maven Plugin in Netbeans at **Tools > Plugins > Available Plugins**.
6. Checkout a project with **Versioning > CVS > Checkout**.

## Long Instructions

### Maven 2 Installation

Now, the environment needs to be setup so that Netbeans can find this copy of Maven installation. Also, the Maven *bin* directory must be added to the system path.

#### Setting Up the Linux Environment

In your command shell, go to the directory where maven was downloaded and execute this command.

```
unzip apache-maven-2.0.10-bin.zip
```

Then add the bin directory to the path. (This assumes a bash shell.)

```
export M2_HOME=/path/to/apache-maven-2.0.10
export PATH=$M2_HOME/bin:$PATH
```

These commands can be placed in the RC file for your shell so that these variables are setup automatically when you login.

#### Setting Up the Windows Environment

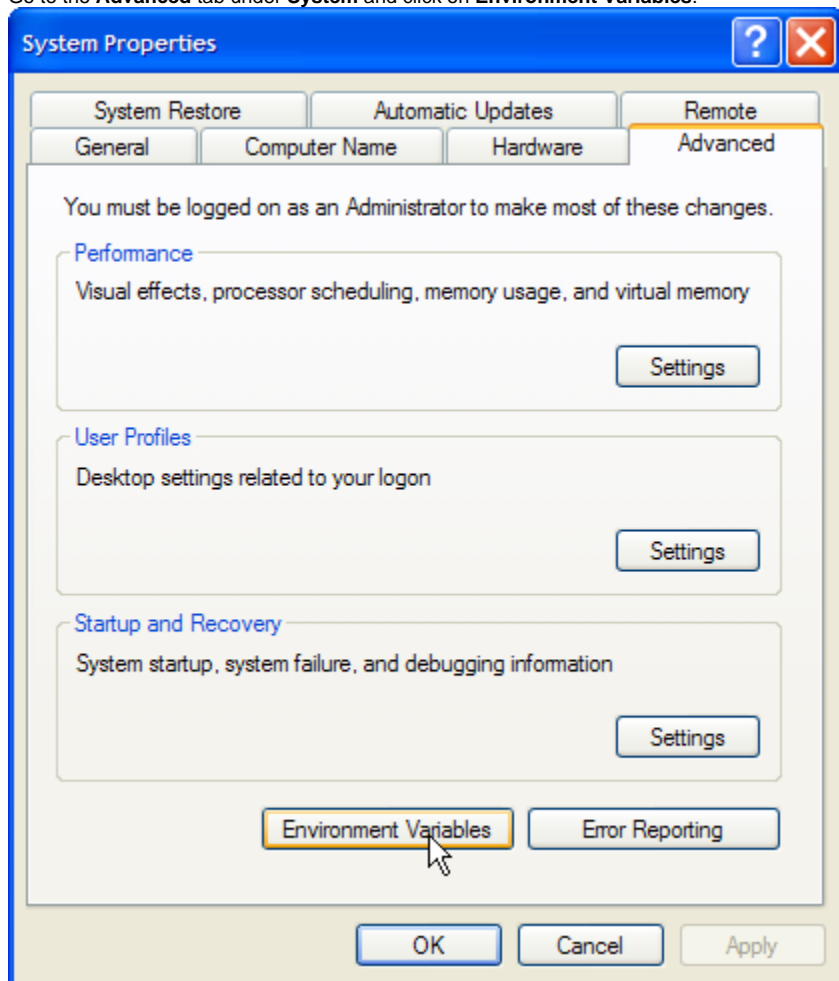
Navigate to the maven zip file, right click on it, and select *Extract All* from the menu.

Open the System menu under **Control Panel > System** (the icon looks like a computer).

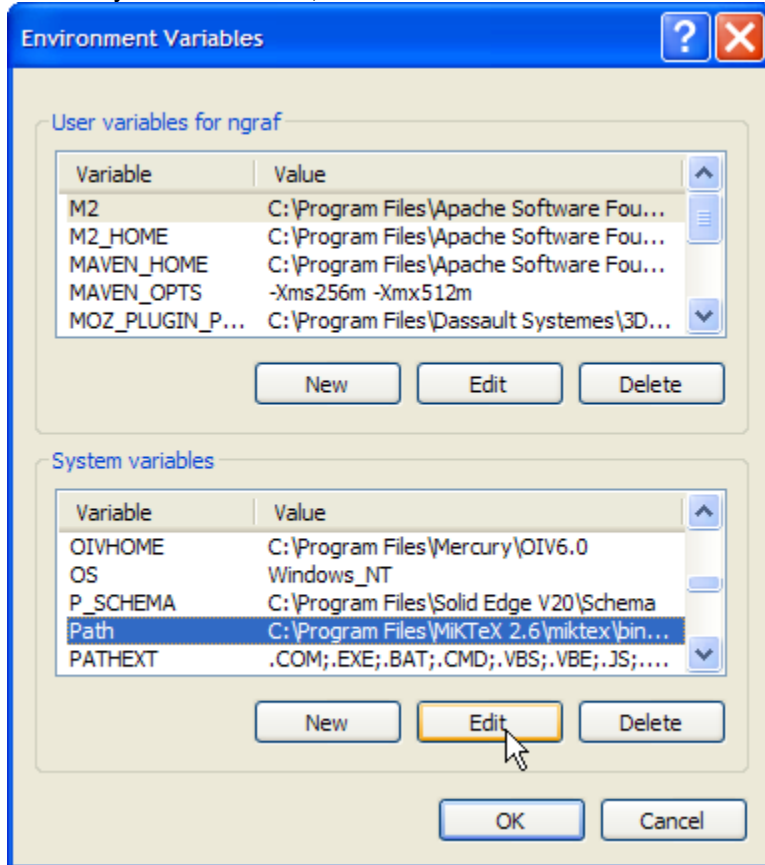


System

Go to the **Advanced** tab under **System** and click on **Environment Variables**.



Under the **System Variables** area, select the **Path** record and click **Edit**.



Hit the **End** key to go to the end of the text box.

Now add the Maven 2 bin directory to the Path. The easiest way to do this is by navigating to the bin directory in Explorer and then copying the full path from the address bar into the Path (using **Ctrl+c**, **Ctrl+v**).

The path items are separated by semi-colons so make sure to put a semi-colon in front of the new entry.

The default location is:

```
;C:\Program Files\Apache Software Foundation\apache-maven-2.0.9\bin
```

Now select **OK**, **OK**, **OK** to apply.

You can check whether maven is in your path by opening a command prompt window (Ctrl+r, type "cmd" into box) and typing

```
mvn -v
```

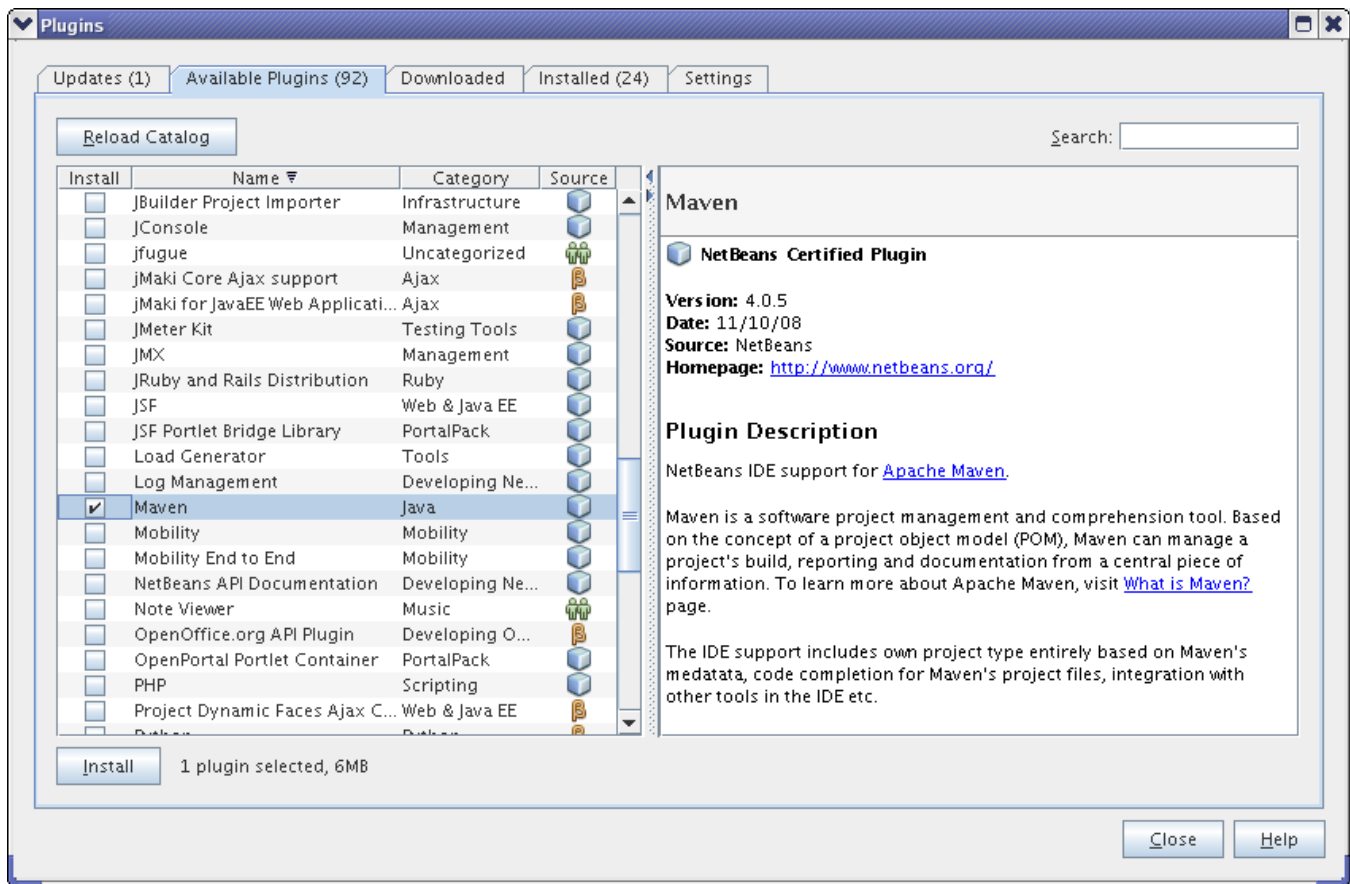
You should see something similar to:

```
Maven version: 2.0.9
Java version: 1.6.0
OS name: "windows xp" version: "5.1" arch: "x86" Family: "windows"
```

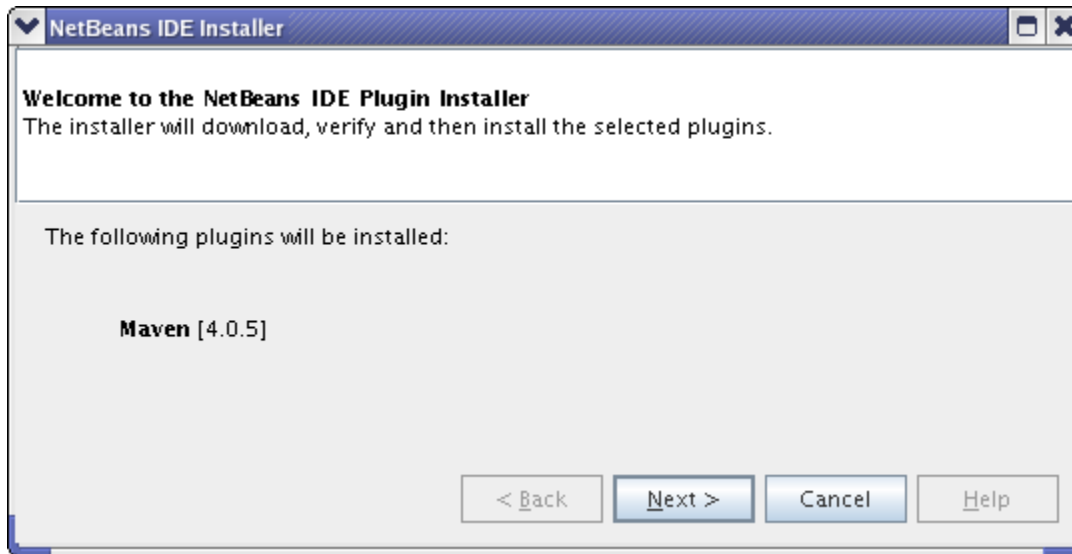
If the **mvn** command is not found, check that the Path variable was set correctly.

## Maven 2 Plugin

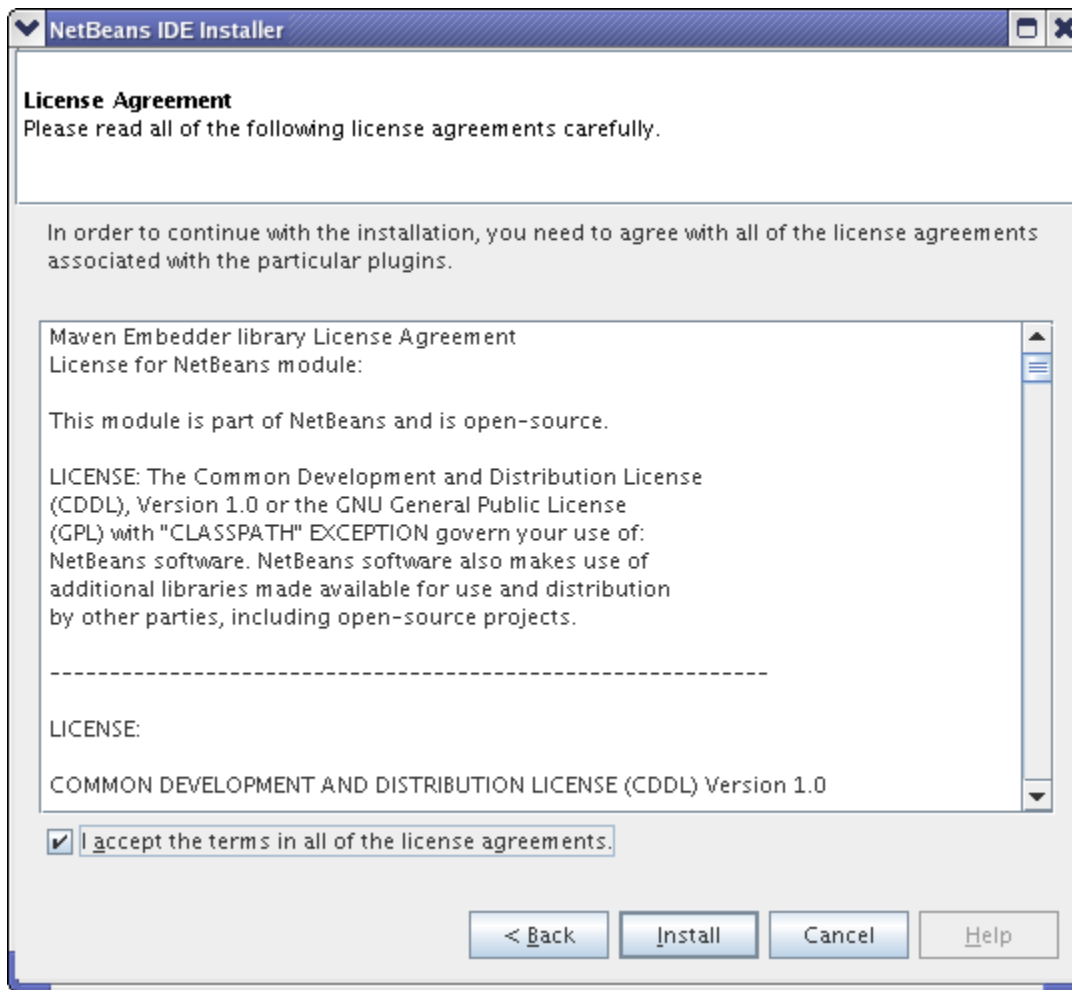
Install the Maven Plugin in Netbeans at **Tools > Plugins > Available Plugins**.



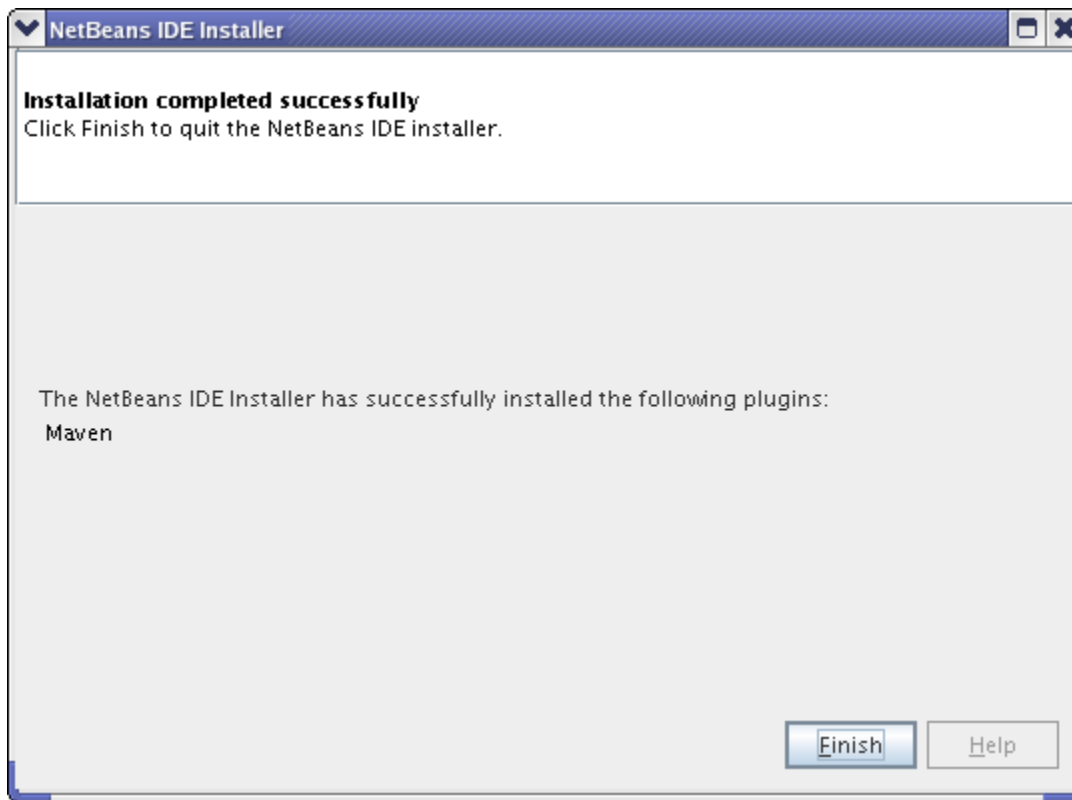
Click **Next** to continue.



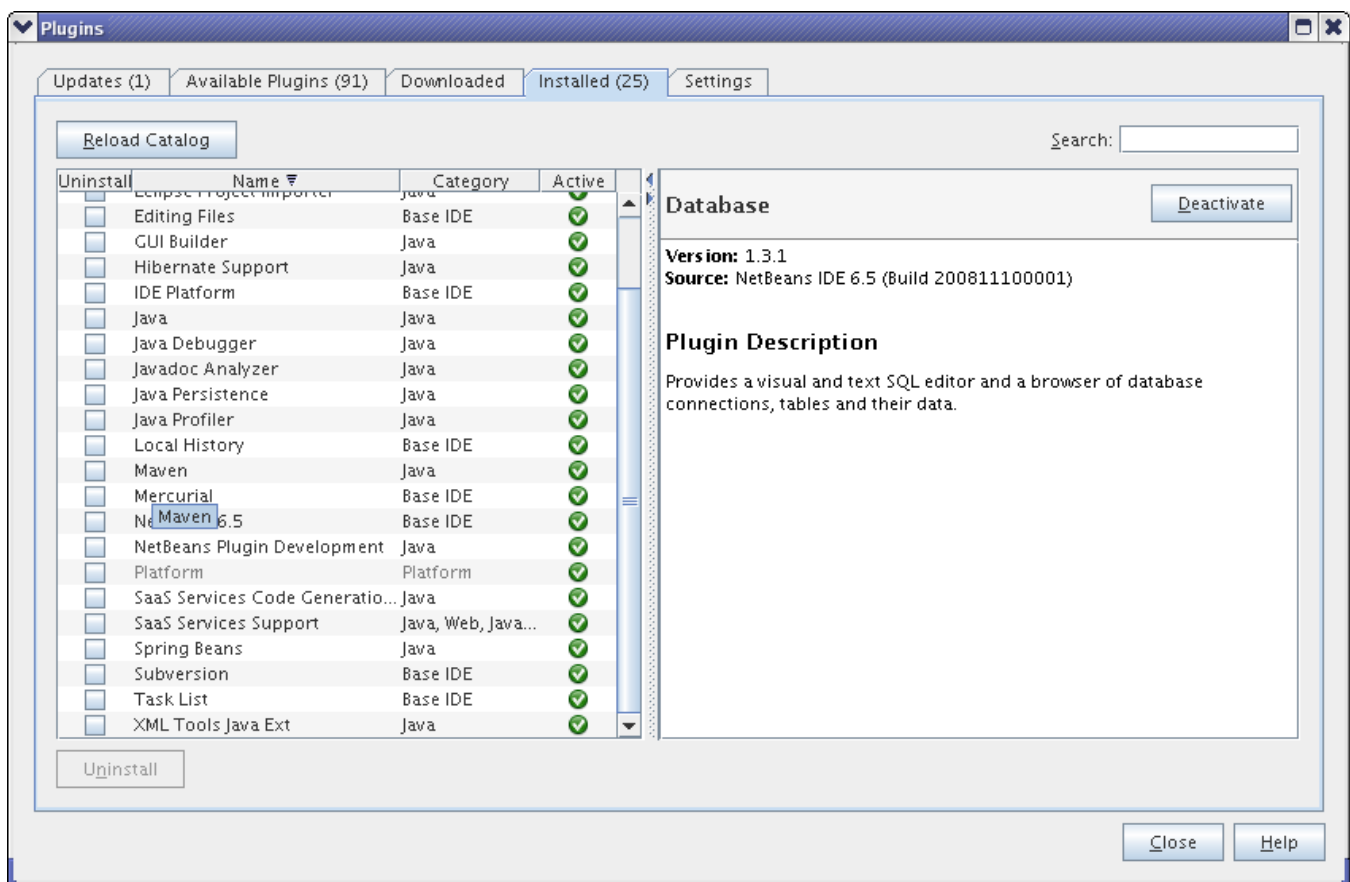
Click **Install** to continue.



Click **Finish** to complete the installation.



The Maven plugin should show in the **Installed** tab.

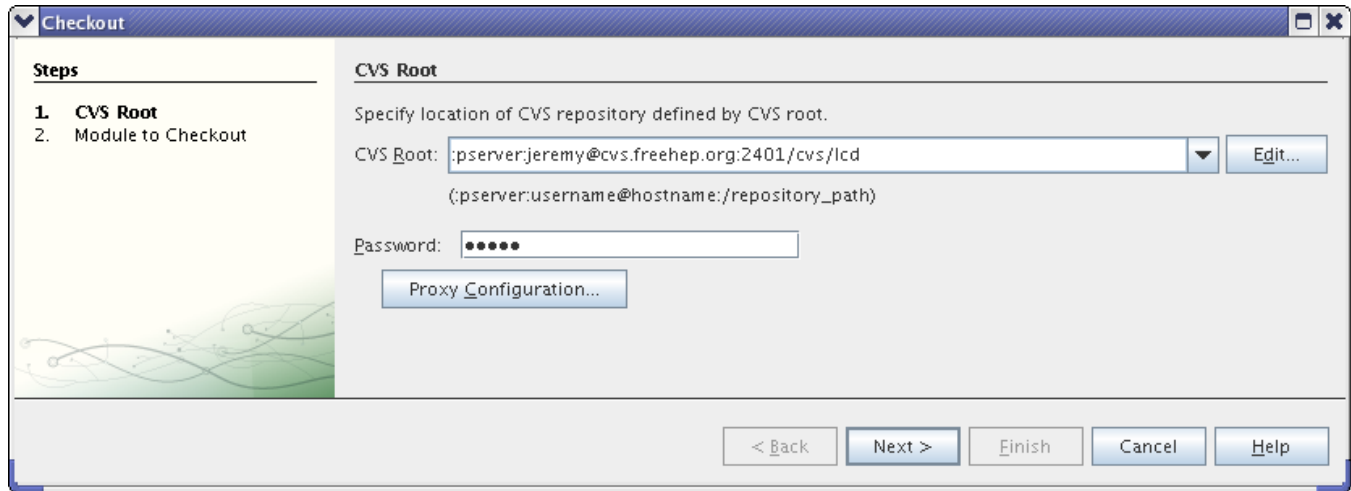


## Project Setup

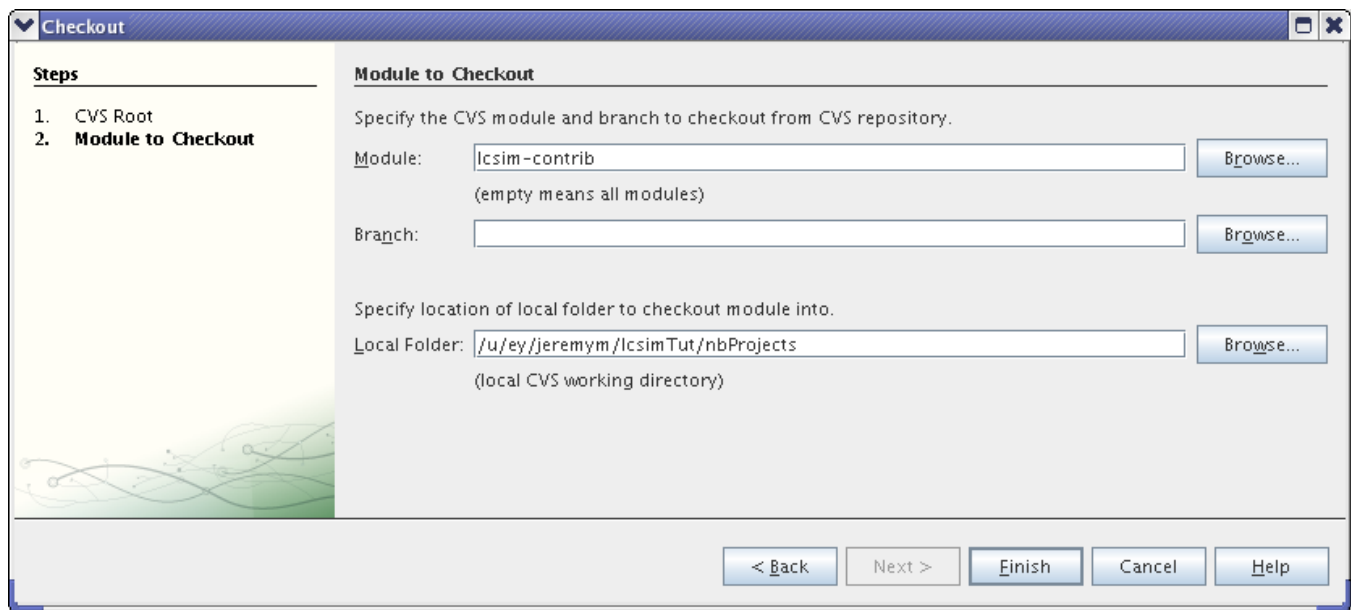
Now that Netbeans is correctly configured, we can checkout and build a Java project.

Checkout the **lcsim-contrib** project from the SLAC CVS by going to **Versioning > CVS > Checkout** in Netbeans.

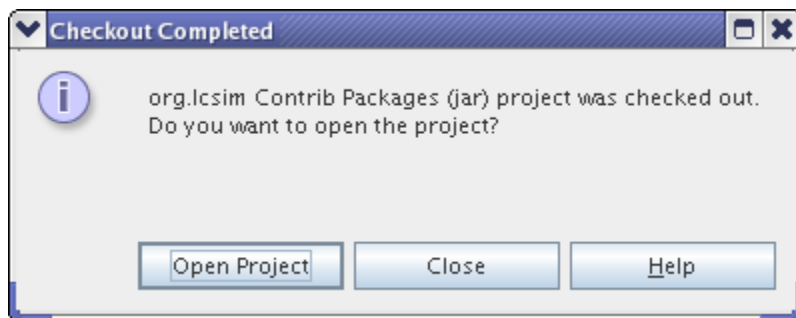
The user name "jeremy" should be replaced with your cvs account name, and the password should be replaced with your cvs password.



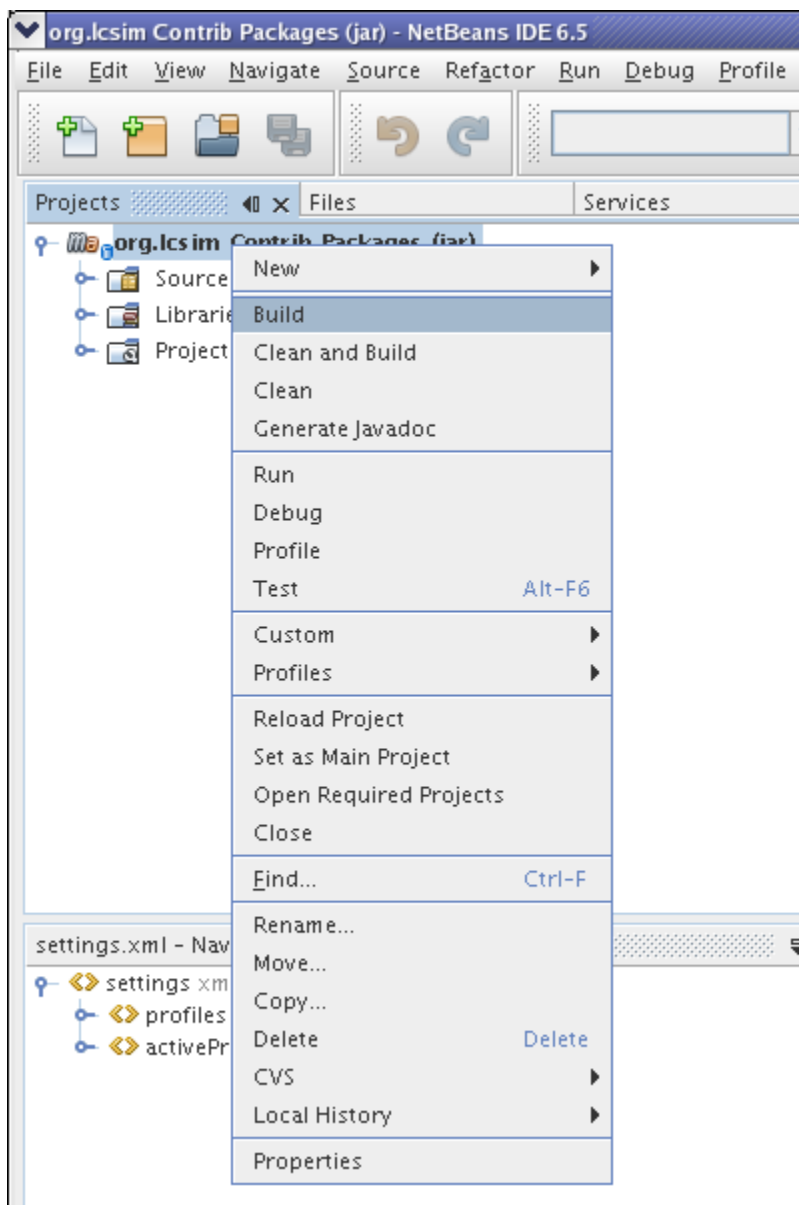
Type *lcsim-contrib* into the Module text box and click Finish.



Now have Netbeans import this checkout as a project by clicking on **Open Project**.



The project can be built in the standard way by right clicking on it and selecting **Build**.



If you managed to setup everything correctly, the build message in the log should be something like the following.



```
NetBeans: Executing 'mvn install'
NetBeans:      JAVA_HOME =/nfs/slac/g/lcd/mc/prj/sw/extern/jdk/pro
Scanning for projects...
-----
Building org.lcsim Contrib Packages
  task-segment: [install]
-----
[resources:resources]
Using default encoding to copy filtered resources.
snapshot org.lcsim:lcsim:1.6-SNAPSHOT: checking for updates from lcsim-maven
snapshot org.lcsim:GeomConverter:1.5-SNAPSHOT: checking for updates from lcsim-maven
snapshot org.lcsim:GeomConverter:1.5-SNAPSHOT: checking for updates from freehep-maven
[compiler:compile]
Compiling 20 source files to /a/surrey01/vol/vol2/g.lcd.mc/prj/users/jeremym/lcsimTut/nbProjects/lcsim-contrib
/target/classes
[resources:testResources]
Using default encoding to copy filtered resources.
[compiler:testCompile]
No sources to compile
[surefire:test]
No tests to run.
[jar:jar]
Building jar: /a/surrey01/vol/vol2/g.lcd.mc/prj/users/jeremym/lcsimTut/nbProjects/lcsim-contrib/target/lcsim-
contrib-1.0-SNAPSHOT.jar
[install:install]
Installing /a/surrey01/vol/vol2/g.lcd.mc/prj/users/jeremym/lcsimTut/nbProjects/lcsim-contrib/target/lcsim-
contrib-1.0-SNAPSHOT.jar to /u/ey/jeremym/.m2/repository/org/lcsim/lcsim-contrib/1.0-SNAPSHOT/lcsim-contrib-1.0-
SNAPSHOT.jar
[freehep-jas:install {execution: default}]
Copied 1 jar file to /u/ey/jeremym/.JAS3/extensions
-----
BUILD SUCCESSFUL
-----
Total time: 12 seconds
Finished at: Thu Dec 11 15:26:13 PST 2008
Final Memory: 17M/193M
-----
```