

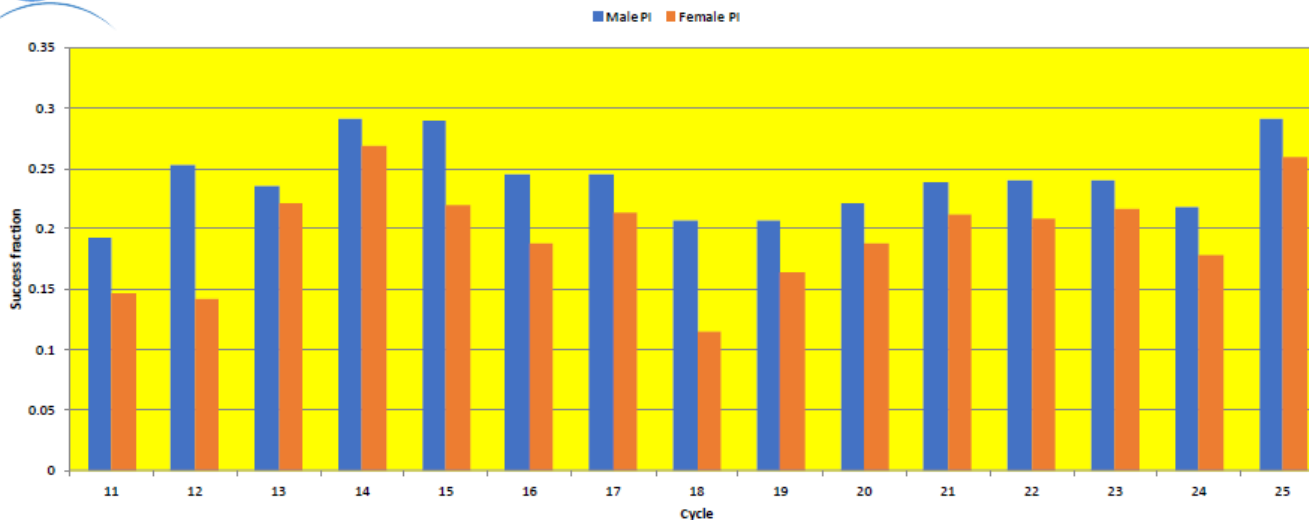
Fermi GI Program & Dual Anonymous Peer Review

Chris Shrader,
Fermi Science support Center,
NASA/GSFC

- Motivated by apparent irregularities in HST selection process
 - Evidence of gender bias investigated in detail by STScI
 - Possible career seniority bias also investigated
- DAPR partially/fully implemented for HST Cycles 26/27
 - Clear effect seen in cycle 27 results
- All NASA GI/GO programs by ROSES 20



PI gender and HST proposal selection statistics

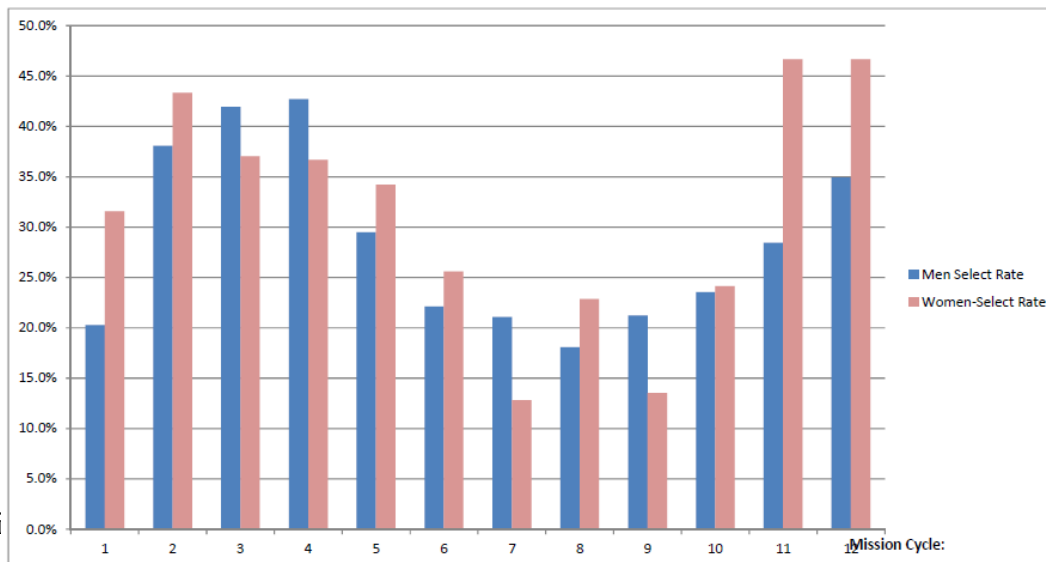


- Clear systematic trend for HST proposals led by male PIs to have a higher success rate
- Comparable analyses since conducted by other facilities & agencies, including NOAO, Chandra, ALMA, & ESA
 - Some indications of similar systematics

Effects of seniority and seniority + gender were also investigated at STScI. Results were inconclusive. Seniority statistics are laborious to compile.

For comparison: Fermi selection rates; limited statistics

STScI SPACE TELESCOPE SCIENCE INSTITUTE



- Proposers list PI/co-I's as before on cover forms
 - Proposers must avoid writing in 1st person style
- ARK/RPS software will be modified to hide names in distributed copies
- Conflicts of interest will be handled as before, but some “hidden conflicts” may not be relevant
- Internal working group involving GSFC supported GO/GI programs established
 - STScI is only existing model
 - NuStar will serve as internal test case this year, but Fermi not until Cycle 14.

- Full implementation for HST cycle 27; consensus is it worked well
 - Fraction of proposals disqualified for non-compliance negligible (< 1%)
 - STScI assigned “levelers” to each panel discourage inappropriate discussion (i.e. guessing author identity)
 - There were apparently very few (none?) such incidents
- A “revelation” process was carried out as a last step
 - Ranked list has been debated and **finalized**
 - PIs/CoIs names are revealed.
 - A proposal may now be disqualified, but NO OTHER changes to the ordered list are permitted
 - Very few (i.e. none?) changes resulted
- Disqualification would be due to a **strong** consensus that the team is not capable of the activities proposed

- Burden on proposers to avoid revealing their identity
 - May be tedious and contrary to normal writing styles
- Fermi program is unique in some regards as we support a wide range of activities
 - Various programs supported in the past are essentially continuations of ongoing efforts and *legacy of previous accomplishment* is *legitimate evaluation* criteria
 - Some supported programs involve joint analyses with proprietary data obtained by proposing team
 - “Progress Reports”, i.e. requests for continuation of multi-year programs **make no sense** w/o identifying team in question
 - **Discontinue?** Mostly rubber stamps anyway.